

### B-3 HERITAGE BUILDINGS AND LANDSCAPES

#### B-3.1 Our Definition of Heritage

Our definition of heritage revolves around the extent to which layers of time are still visible on a structure. When we looked at the buildings that were designated "Heritage" by the Town of Gibsons, evidence of this layering was not visible. The buildings officially recognized as heritage have been recently renovated with fresh coats of paint so that, to an outsider unaware of their restoration, they appear to be new, and do not allow the evidence of their age, or their sense of "Heritageness", to show through. Therefore, we decided not to look only at buildings that are considered official "Heritage" by the Town, but to also look at buildings and places that revealed the passage of time and the stories of the town.

We were fortunate to receive information from Lola Westell of Elphinstone Pioneer Museum. Passages in quotations are taken from personal correspondence with her.

#### B-3.2 Designated Heritage

There are currently 2 designated buildings in Gibsons:

1. Womens' Institute Hall [HCA bylaw 582-1, Mar 21, 1989]
2. Gibsons Elementary School / School Dist. Resource Centre [HCA bylaw 582 Mar 15, 1988]...

#### B-3.3 Other Locally Recognized Buildings and Sites

According to Westell, "...other buildings worthy of respect are Stonehurst [Inglis House], Marina House, The Manse, Fletcher home, Lowden home, First Municipal Hall, Wynken, Blynken and Nod, Orkestra House, Molly's Reach, Village Store, Seaview Gardens and several other homes in the area that are not easy to label."



**What We Found**

**Pier**

Gibsons Wharf is one hundred years old. Currently, the wharf is operated by the Gibson's Landing Harbour Authority.

The following are considered central to the pier's historical importance within the community:

- important connection between land & sea; between ocean and fishery
- weathering in certain areas gives evidence of layering of time historic way of arriving at Gibsons
- visual landmark; first thing people saw when they arrived
- still used as a work place

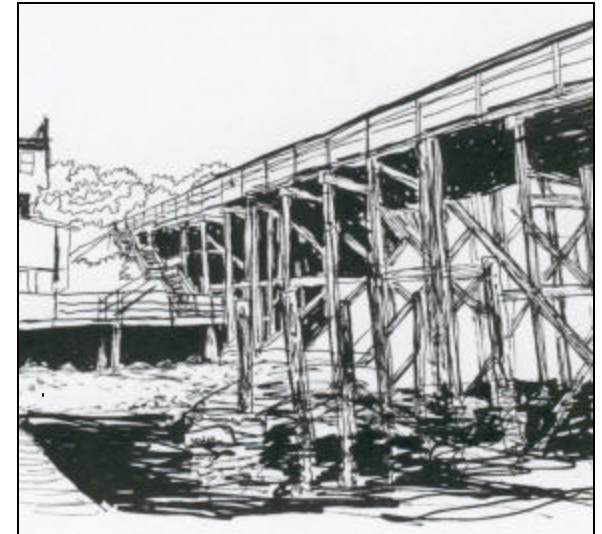
**Heritage Corner (Heritage School, Church & Theatre)**

**Heritage School – Designated Heritage**

- pedestrian-oriented (in close proximity to the street without parking, parking in the back)
- recently restored; unable to see the layers of time
- sited amongst small landscaped area
- shares property with the Gibsons Elementary School

"Gibsons Elementary School was built as the 2 room Howe Sound School in 1910 and expanded in 1922 to the size it is today. From 1937, when it consisted of 5 classrooms to today, it has almost always been used for teaching and was known as Gibson's Landing Elementary School for most of its life. It is owned by School Dist. #46 and they recently partnered with Howe Sound Pulp and Paper [the mill at Port Mellon] to do the beautiful restoration job you see now. It is being used for the Alternate and Pathfinders programs, Capilano College, the Technical Dept., School Dist. #46 and the Howe Sound Training Centre. It is now called the Heritage School."

**What We See**



What We Found

Church on Sunshine Coast Highway

"...St. Bartholomew's Anglican Church was constructed in 1892 and the original structure is now the Nave of the expanded church. Abandoned in the early 1900s, Rev. C. Owen Darby renovated it in 1928 and it has been in continuous use since. This is the oldest building in Gibsons and has recently been completely renovated."

- associated with memories of people of the past who attended that church
- part of historic neighbourhood
- without the new renovation, it looked more like a heritage building than the school & the community center, it felt to us like it had a long history behind it

Gibsons Heritage Theatre

"...The Women's Institute Hall was built by the Howe Sound Womens' Institute in 1929, using volunteer labour and has a rich and varied history. For many years it was the Cultural centre in this area and was used and supported by all. The Gibsons Landing Heritage Society took on a 9 year project to restore the building as a playhouse has recently restored this fine building and now leases it from the Town of Gibsons. The theatre reopened April 29, 2000. It has a fully equipped 150-seat theatre, an artists display area, refreshment area, office and meeting spaces that the Society can rent out to a wide cross section of the Coastal community. The GLHSoc calls it the Heritage Playhouse now, reflecting its primary use as a theatre."

Inglis House

The house, built in the first decades of the 20<sup>th</sup> century, is associated with the early history of Gibsons. Its first owner, Dr Inglis, was appointed the Resident Physician at Gibsons on November 1, 1913, and built his house/clinic with his wife. The layers of history and use are evident in the existing fabric of the house.

...the Town of Gibsons set up an Advisory Heritage Commission, which has only met once, in Oct. 1999. At that time, the Committee was asked about their priorities dan the Inglis House topped the list..."

What We See



What We Found

3.4 Buildings & Landscapes Worthy Of Respect

A number of houses that were showing layers of time are not currently recognized officially by the Town. In particular, these include the following two examples (shown at right):

1. The first is a cottage located beside the Old Community Centre on Heritage Corner
2. The second is an historic house located on the seawalk beside Molly's Reach & the pier

Gospel Rock

"...It is said that in the early 1900s a member of the Plymouth Brethren painted messages on Gospel Rock proclaiming "The Wages of Sin is Death", "He Shall Be Born Again" and "Christ Died For The Ungodly". Although not visible from the road, fishermen used the rock as a landmark. These messages were kept brightly painted for many years and the museum has some photos of them. This spot has been used for Easter Sunday Sunrise Services for many years. The original name was Shephard's Bluff for an early settler."

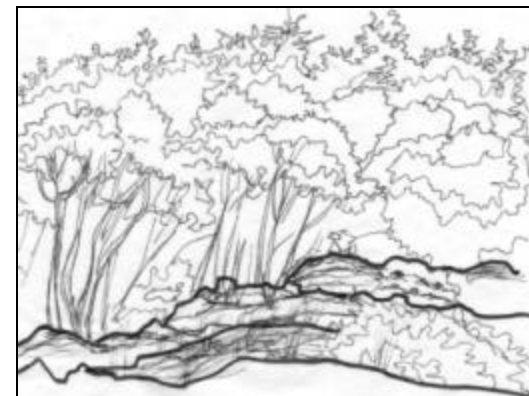
What We See



1. historic cottage near Heritage Corner



2. historic house along seawalk





**What We Found**

Water Pump

- clean, drinkable water which people take pride in
- people associate it with their history even though it is not recognized as being a heritage site

**Molly's Reach**

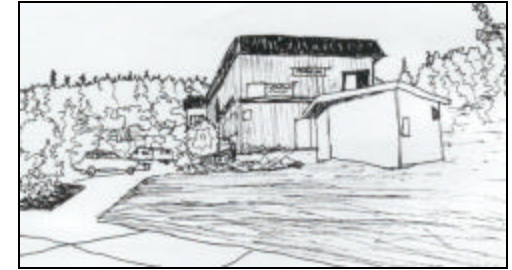
- constructed in 1926 by C.P. Smith
- a former grocery/furniture/hardware/liquor store which tured into a restaurant on July 13, 1995
- in 1970, CBC filmed The Beachcombers here for 19 years

**Abandoned Fishing Boat**

"...the 'fishing boat' that you refer to was specifically made to look aged for a movie being shot in the area. Built this year, it is a 'special effect' that I hear a lot of people make interesting comments about."

- a symbolic representation of the history of the town
- connection to fishing symbolizes the connection between people's lives and the ocean
- the passage of time is reproduced in this reproduction of an historic artifact

**What We See**



**Gibsons Coast and Forest Land**

Many beaches and trails along Gibsons Coast should be recognized as heritage sites as they predate the area's built heritage and have significant meaning for many of the town's inhabitants.



*View of Gibsons coast*